

[View this email in your browser](#)

Members Newsletter
Latest News, Events & Information

November 2023



PCF November 2023
Events



PCF EVENT - NOV 2023- Speaker from
The SEND Team - Roles and
Responsibilities, Attendance and
Exclusion, Alternative Provision

Joanne Southall • Sep 14, 2023

Does your child/young person receive SEND Support or have an EHCP?

Are you in the process of apply for an EHCP?

Would you like the opportunity to understand how the SEND Team looks after its reshuffle?

Do you have any experiences of school exclusions you would like to feedback?

Would you like to meet the SEND Leadership Team?

If so, this is your opportunity to talk to the decision makers of additional support....

A FREE event for all Parents and Carers of children/young people who have any Special Educational Needs &/or Disabilities (SEND)

Wednesday 22nd November 10:00am – 2:00pm

At:

Vicars Cross Golf Club

Chester, Tarvin Rd, Christleton, Chester CH3 7HN, UK

At the meeting - You will get to hear about and have your say on the following topics:

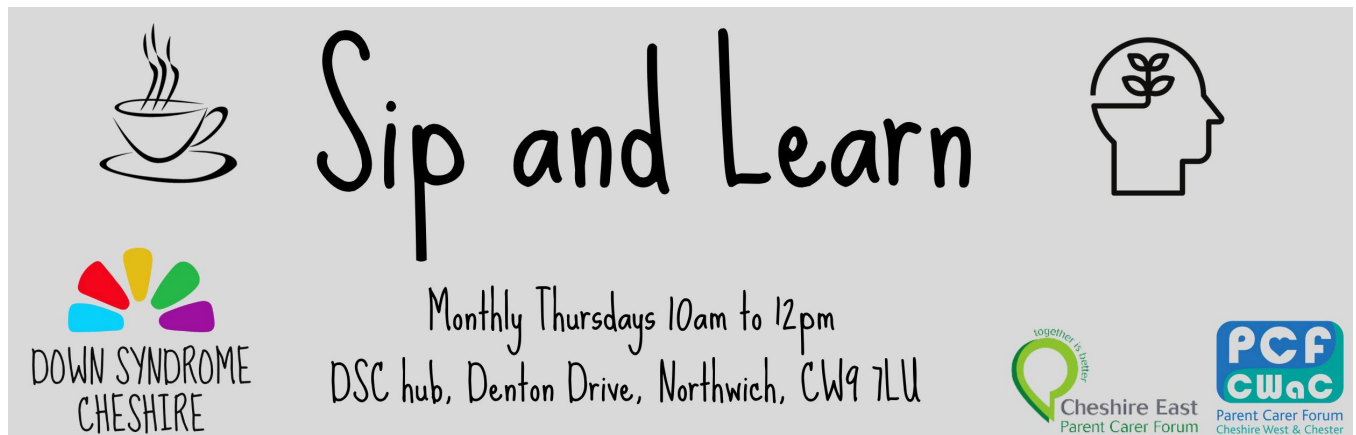
SEND Team - Roles and Responsibilities

Attendance and Exclusion

Alternative Provision - What is it

Marketplace - Stands & Information on activities, groups and services in your area will also be available.

Free Parking, Free Lunch, Free Tea/Coffee & Cakes, Wheelchair Accessible.

[Subscribe](#)[Past Issues](#)[Translate](#) ▾[RSS](#)[Booking Link](#)


Sip and Learn

Monthly Thursdays 10am to 12pm
DSC hub, Denton Drive, Northwich, CW9 7LU

DOWN SYNDROME CHESHIRE

Cheshire East Parent Carer Forum

PCF CWaC Parent Carer Forum Cheshire West & Chester

We are delighted to be working in partnership with Down Syndrome Cheshire and Disability Positive to host a Sip and Learn coffee event on 9th November.

Come along at 10 am to catch up with other parents in an informal setting and learn more about Advocacy. This session is aimed at parents/ carers across Cheshire who want to know more about where to get support.

Our partners at **Disability Positive** will be giving a presentation on how they can support you.

- Do you need support to say what matters to you and your child and understand your rights?
- Do you want to know more about Independent Mental Capacity Advocacy (IMCA)
- Are you worried about your Child turning 18 and knowing how best to advocate for them?

The session will run from 10 am to 12 pm, with the chat from Disability Positive taking place between 10.30 - 11ish. No need to book. Just come along and have a chance to Sip and Learn.

No booking required.

[For More Information, Click Here](#)



Working Parents...

Are you a working parent/carer?

Does your child have SEND?

The PCF CWaC has ran a number of evening zoom virtual forums and focus groups to help support working parents, unfortunately the uptake on these has been low with only five parents engaging.

This is your opportunity to let us know what would work best for working parents.

How would you like to access our service?

[Subscribe](#)[Past Issues](#)[Translate ▾](#)[RSS](#)

In the meantime don't forget that all our virtual sessions are recorded and available through our website and on our YouTube Channel. (please use the link below to access them)

Working Parent Feedback Form

Recordings of Virtual Forums

Parents & Carers of Children and Young People with SEND.
Your child/young person doesn't need to have a diagnosis to access the PCF.

PCF CWaC
Parent Carer Forum
Cheshire West & Chester
2023-2024

The aim of the PCF...
Be the voice of as many parents/carers as possible
Influence decisions about gaps in services
Provide info & signposting to Professionals and Voluntary Organisations
Co-produce improvements to SEND services.

In-Person Events	Virtual Events
<p>2023 Wed 22 Nov, 10:00am - 02:00pm Vicars Cross Golf Club, Chester SEN Team Attendance & Exclusion Alternative Provision - What is it</p> <p>2024 Wed 7 Feb, 10:00am - 02:00pm Hartford Golf Club, Hartford Live Well - Meet the professionals who support your child Mental Health Services Update</p> <p>Wed 22 May, 10:00am - 02:00pm Holiday Inn, Ellesmere Port Preparation to Adulthood Supported Internships - What happens when my EHCP ceased? Social care - Supported Living/Direct Payments Transitioning to Adulthood services</p>	<p>2023 Wed 11 Oct, 10:30am - 11:30am Where do I go for support? IASS Carers Trust</p> <p>2024 Wed 20 March, 10:30am - 11:30am Short Breaks and Wrap around care update. ETOS - Education other than at School - What is it?</p> <p>July - Date TBC AGM 2023 Parent Carer Survey results</p> <p>Coffee Events 2023-24 Schools, Charities, etc. List of dates will be on our website, new dates added throughout the year.</p>

Check our website for more information, previous events, or watch again on our YouTube channel.

To book any of our events or for more information, scan the QR code, or visit our website.
www.pcfcheshirewest.org



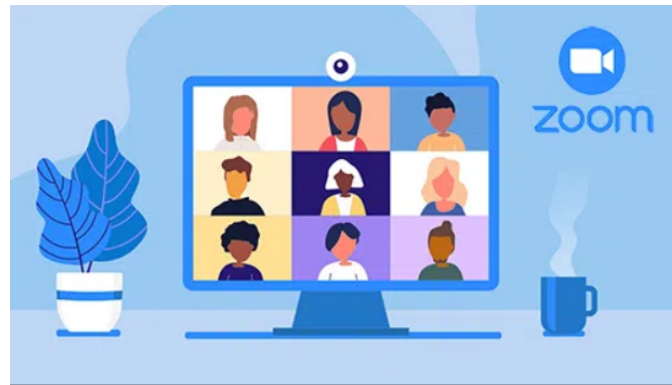

PCF October 2023 Events

Update

What a fantastic start to the 2023/24 academic year, we hope you have found Octobers Events both informative and an opportunity to meet other parents/Carers of Children/Young people with SEND.

October saw our first virtual forum of the year presented by IASS and CWCT as well as our one day parent training course on the SEND Framework.

With much more to come in November don't forget that you can keep up to date with the latest PCF news



October PCF Zoom - Support (where do I go?)



Information, Advice and Support Service




Cheshire and Warrington Carers Trust

The First of our Virtual Forums for 2023/24 were presented by IASS and C&WCT, both presentations were very informative and received really positive feedback from those attending. The recording of the Forum has been uploaded onto our YouTube channel, making it accessible for you to watch back at your leisure.

[Watch our October Event Here](#)

Parent Carer SEND Law Training Session



Help you know your rights by:

- Explaining the law involved
- Exploring rights for parents and young people
- Recognise when you are being denied entitlement in accordance with policy
- Being able to make informed choices about entitlement

Special Educational Needs Expert Training & Advocacy Ltd Copyright 2023



On Wednesday the 18th of October parent carers met at the Down Syndrome Cheshire HQ in Northwich to take part in a SEND Law training session. The training was delivered by Claire Jackson from 'SENETA Ltd.' - Special Educational Needs Expert Training and Advocacy. Claire has 19 years experience in SEND which includes advising parents of children and young people with SEN and representing them at tribunal. The training session covered the process of applying for an EHC assessment to the final EHCP and the legal duty of Local Authorities and education providers and the rights of children, young people and their parents.

If you would like to view the slides from the training session, please use the link below...

SEND Law Training Presentation

Signposting News USEFUL LINKS & INFORMATION



Friday Parent Carer Space



1st Friday 12pm-2pm
Parent Carer Lunch
A buffet lunch provided



3rd Friday 10am -12pm
Information Morning
Organisations sharing information about their services
Keep an eye on for adverts about these events

No need to pre - book...just drop in!

Fancy a cuppa, lunch and a chat with other parents? Come along to our Friday parent carer lunch in our centre



STOMP STAMP

The STOMP STAMP team at NHS England have created a survey to find out people's views and experiences about psychotropic medication.

Psychotropic medication is any medication that affects the mind for example, medication used to treat psychosis, depression, anxiety, sleep problems, ADHD and epilepsy.

The survey is for children, young people and adults who are autistic or have a learning disability, their families and carers. The information from the survey will be used to inform plans to improve how psychotropic medication is used – so people get the right medication at the right time for the right reasons.

The more people who complete the survey, the better informed our work can be.

This link also explains more about STOMP STAMP and how the information will be used

Christmas Holiday Club

The Wingate Centre
Brightening the Lives of
Individuals with SEND

Holiday Club for SEND children

4 days over 2 weeks
Dates: 19th - 20th December,
3rd- 4th January

Free for children receiving
income related free school
meals, with lunch provided*

Limited spaces, booking essential

<https://eequ.org/experience/5307>

 The Wingate Centre, Wrenbury Hall Drive,
Wrenbury, Cheshire, CW5 8ES
Telephone: 01270 780456 email:
gym@thewingatecentre.co.uk
www.thewingatecentre.co.uk
Charity Number 1197017

*Charge applied if not in receipt of IRFSM

Cheshire East
TOGETHER for Children and Young People
Together we will make Cheshire East a great place to be young

Department for Education

Cheshire East
HAF
Healthy Active Families

Cheshire East
Council

Live! All Stars
3.30-5.30pm

Monday - Arts & Crafts
Tuesday - Lego Club
Wednesday - Sports Club
Thursday - Sensory Session
Friday - Movie Club

Ages 11-16 years

For further info please contact the office on 01244 320479 or email admin@livecheshire.org.uk £12 per session

admin@livecheshire.org.uk

Live Well
Cheshire West



NEW FEATURE.... Discover Live Well Cheshire West.

Your new look PCF Newsletter will take you into "Live Well".

Let us help you explore what's on offer.

This month we are looking at EHCP.

What is an Education Health Care (EHC) needs assessment?

How long will this take?

Education, Health and Care Needs Assessment and Plans

Click on the link below to enter "Live Well" and view the full PowerPoint presentation of the Early Years Road Map with links to useful resources

Live Well EHCP Information

USEFUL CONTACTS



Live Well Cheshire West - <https://www.livewell.cheshirewestandchester.gov.uk>

Information Advice and Support Service (IASS) - Tel 0300 123
7001 <https://www.livewell.cheshirewestandchester.gov.uk/Services/1279>

SEN Team - Tel 0151 337 6505
senteam@cheshirewestandchester.gov.uk

Starting Well - <http://www.startingwell.org.uk/>

West Cheshire 0-16 CAMHS Tel - 01244 393200
<https://www.cwp.nhs.uk/services-and-locations/services/west-cheshire-0-16-camhs/>

IPSEA- Call-in Helpline Tel- 0300 22 5899
<https://www.ipsea.org.uk/Pages/Category/service-overview>

CONTACT Advice Line -Tel-0808 808 3555
<https://contact.org.uk/>

Get Involved with the PCF...

[Subscribe](#)

[Past Issues](#)

[Translate](#) ▼

[RSS](#)

and learn about what's on offer in Cheshire West & Chester.

To contact us.....visit our website www.pcfcheshirewest.org

email contact.pfcwac@gmail.com

or join us for one of our meetings.

We hope to see you soon!



Copyright © 2023 CWAC PCF, All rights reserved.

Our mailing address is:

contact.pfcwac@gmail.com

Want to change how you receive these emails?

You can [update your preferences](#) or [unsubscribe from this list](#).